

THIS DRAWING IS UNPUBLISHED.

RELEASED FOR PUBLICATION

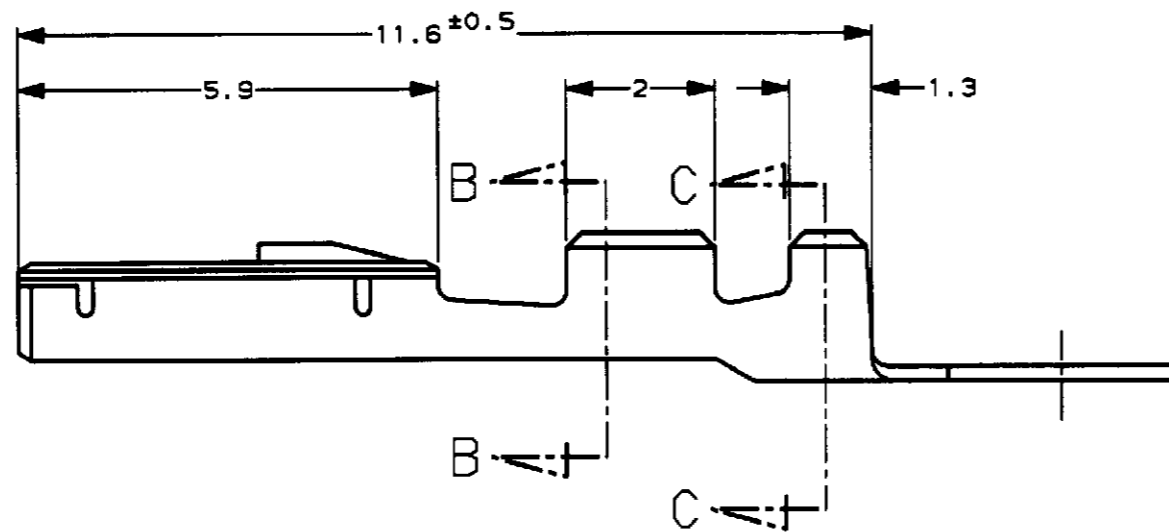
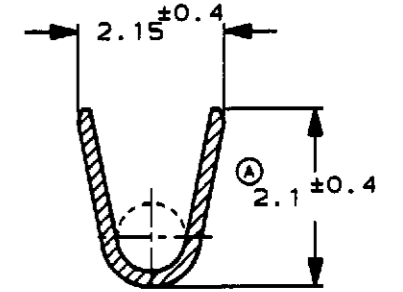
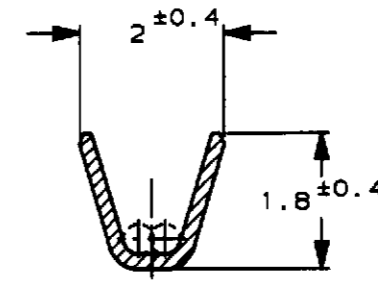
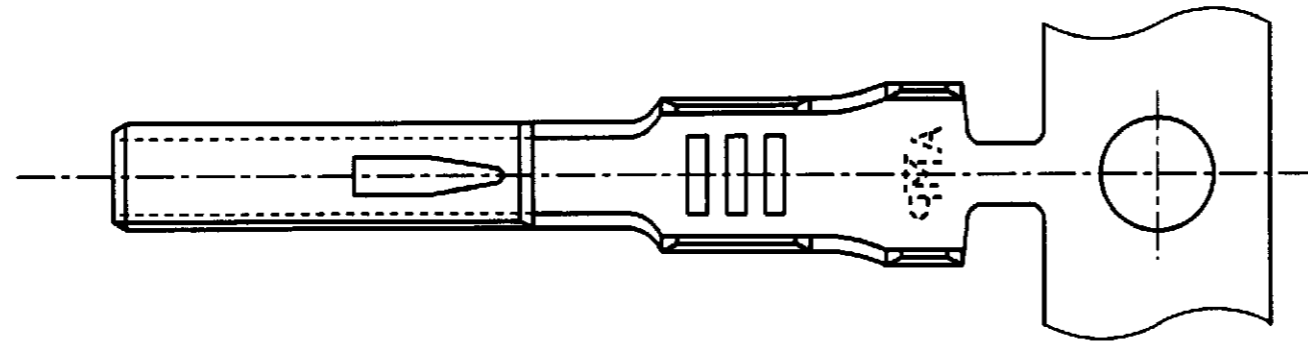
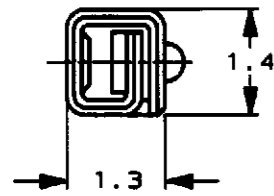
.19

LOC DIST

REVISIONS

© COPYRIGHT 1994 BY AMP INCORPORATED. ALL RIGHTS RESERVED.

| P | LTR | DESCRIPTION | ECN          | DATE    | DWN | APVD |
|---|-----|-------------|--------------|---------|-----|------|
| 0 |     | RELEASED    | FJ00-3023-95 | 7/31'95 | TS  | AT   |
| A |     | REVISED     | FJ00-0253-97 | 2/20'97 | TH  | KY   |
| B |     | REVISED     | FJ00-2055-98 | 27OCT98 | TH  | KY   |



SECT. B-B

SECT. C-C

— 1 ; 本 ☒

注：  
1. 適用圧着規格番号：114-5193

NOTES;  
1. APPLICABLE CRIMPING SPEC No. 114-5193

|   |  |                                |  |                                   |
|---|--|--------------------------------|--|-----------------------------------|
| THIS DRAWING IS A CONTROLLED DOCUMENT FOR AMP INCORPORATED. IT IS SUBJECT TO CHANGE AND THE CONTROLLING ENGINEERING ORGANIZATION SHOULD BE CONTACTED FOR THE LATEST REVISION. |  | DWN<br>T. SHINOHARA<br>7/31'95 | WIRE RANGE<br>適合電線断面積<br>AWG #22-#20 (0.3-0.5mm)                               | INSULATION DIA<br>被覆外径<br>1.4-1.7 |
| DIMENSIONS<br>単位 種<br>mm  |  | CHK<br>K. YUASA<br>7/31'95     | <b>AMP</b><br>株式会社アールピーエー<br>Kawasaki, Japan                                   |                                   |
| TOLERANCES UNLESS OTHERWISE SPECIFIED<br>一般公差<br>10% : ±0.2<br>30% : ±0.25<br>100% : ±0.3<br>ANGLE : ±0.3°  |  | APVD<br>A. TOMITA<br>7/31'95   | NAME<br>名称<br>REC CONTACT (MINI MULTI LOCK CONN)<br>リセ コンタクト (ミニ・マルチ・ロック コネクタ) |                                   |
| MATERIAL<br>材料<br>PRE-TIN<br>錫メッキ済リン青銅0.2t  |  | FINISH<br>仕上<br>#              | PRODUCT SPEC<br>製品規格<br>#  | APPLICATION SPEC<br>取付適用規格<br>#   |
|   |  | WEIGHT<br>0.16g                | SIZE<br>A3   | CAGE CODE<br>00779                |
|   |  | CUSTOMER DRAWING               | DRAWING NO<br>917308   | SCALE<br>10-1                     |
|   |  |                                | SHEET<br>1   | OF<br>1                           |
|   |  |                                | REV<br>B   |                                   |

参考 ☒ 面